

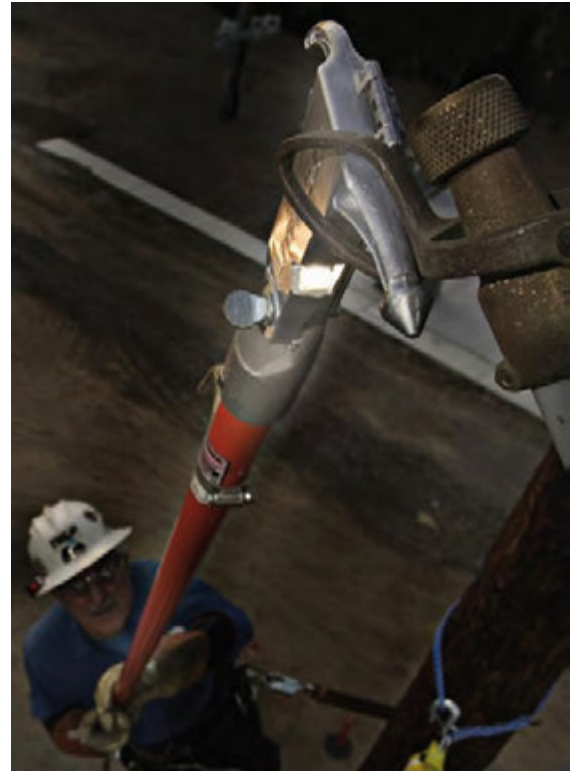
## Litfinger Disconnect Hook

The Litfinger™ Disconnect Hook shines light directly on to your work area with no shadow when performing fuse/switch operations at night or in gloomy conditions. LED technology makes it possible to design this lightweight, high illumination product for linesmen and engineers. The Litfinger fits on to all makes of telescopic rod with a universal fitting, or can be supplied with an adapter to fit on to standard slot together operating rods.



### Features

- Bright, unbreakable 1 watt LED light
- Lightweight aluminium body, only 178g with batteries
- Pointed head for breaking off ice or debris
- Notched straight arm to secure fuse while lowering or raising hot stick
- High/low switch for increased battery life
- Water resistant battery compartment with sealed silicone rubber push button
- Sealed borosilicate window to resist heat and flash
- Passed 3000V, 8000A, ½ sec (30 cycles) arc blast test
- Easy access battery compartment
- Universal splined slotted connector attaches to hot sticks
- Runs on 3 x AAA alkaline or lithium batteries



## Litlink

Using the same technology as the Litfinger, the Litlink incorporates an LED light into a universal to universal adapter, allowing fitting of any universal tool such as saws, pruners etc. Combined with our Telad adapter (see page A16), it can be used with all standard pole heads for earthing, fusing and switching operations.

CAT NO	DESCRIPTION
16001	Litfinger
16002	Litlink