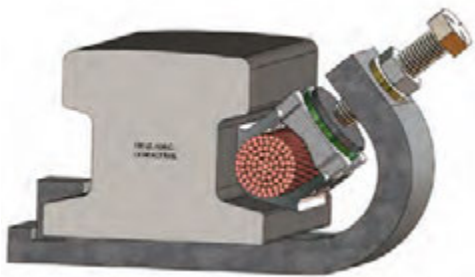


## Running Rail Connector

Designed as a permanent connection for copper conductor onto rails of a variety of profiles used in heavy rail mass transit systems. Constructed using heavy duty aircraft quality steel spring member, copper cable nest indenter, hex head bolt and locking nut. The clamp is an active spring that applies a consistent force on the conductor ensuring a positive connection through heat cycling and train vibration.

Avoids the need to drill holes in the rail. The rail is not therefore subjected to warping by excessive heat or weakened by drilling. Extremely quick installation can save many man hours. The "J" shaped spring member of the connector helps overcome loosening problems associated with harsh train vibrations by flexing rather than breaking. The consistent spring pressure also prevents moisture and contamination from seeping into the connection. All copper components are tin plated and steel components are galvanized.

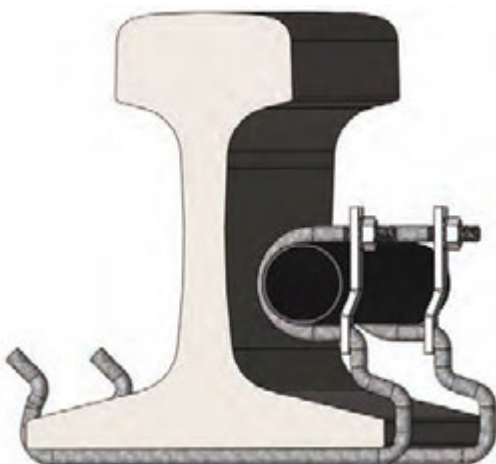


## Contact Rail Connector

Designed with all the features of the Running Rail Connector but profiled to the contact or third rail for electrical feed or earthing.

## Rail Bonding Connector

Fully adjustable connector designed to accommodate any size of running rail for bonding and earthing applications. The rail bond connector is easy to install and remove and can be reused.



## Support Spring Rail Clips

Designed to support and hold a wide range of conductors and signal or communication cables in close proximity to the rail. Tempered steel wire construction assures positive grip on the rail. Extremely quick and easy to install, removable and reusable.

Available in different configurations to accommodate different size rails and multiple conductor combinations.